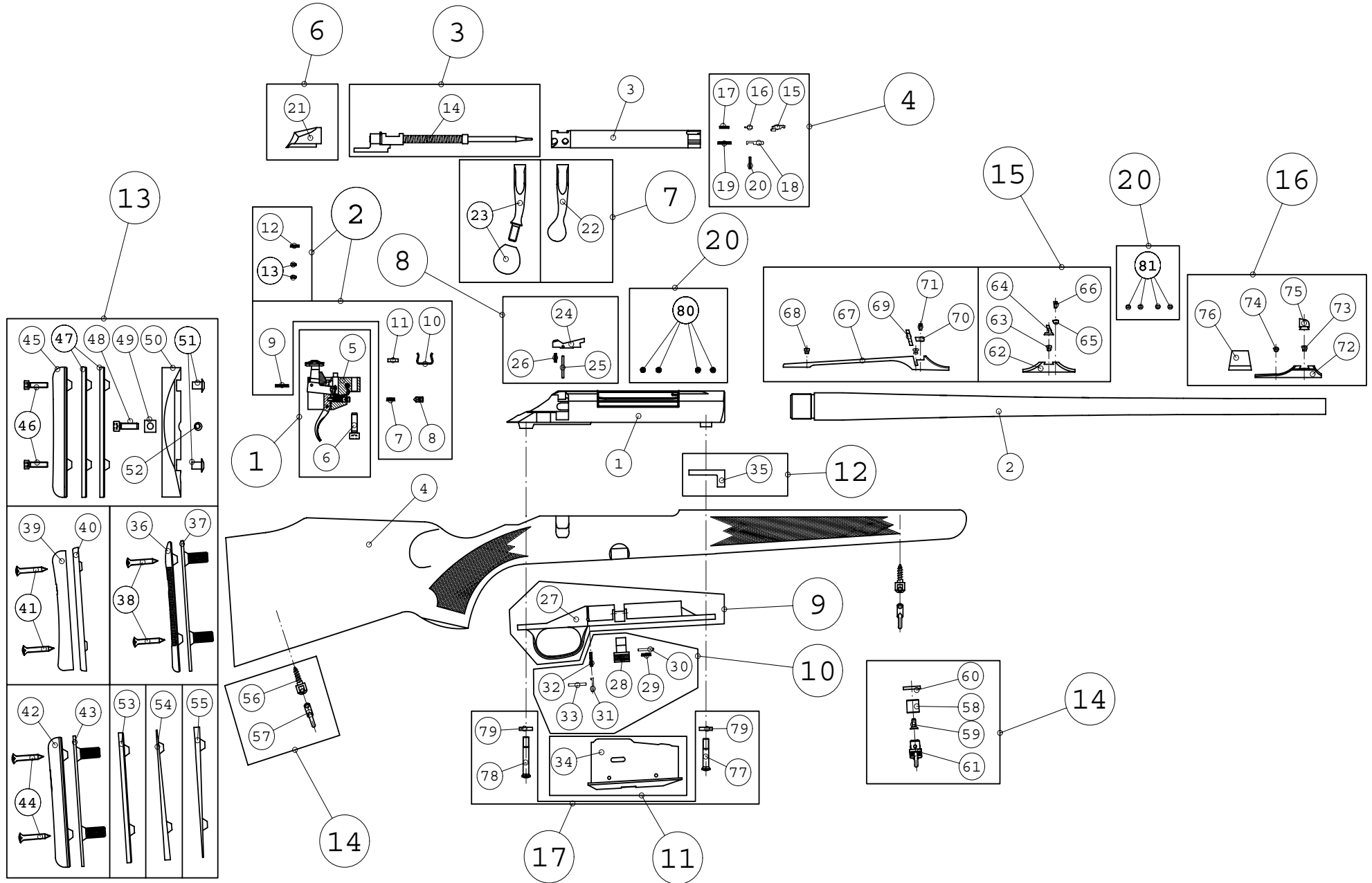


TIKKA M590/690/595/695 - SPARE PARTS EXPLODED VIEW



TIKKA M590/690/595/695 - SPARE PART LIST

| SET NUMBER | DESCRIPTION | CODE |
|------------|-----------------------------------|----------|
| 1 | TRIGGER COMPLETE | S584T110 |
| 2 | TRIGGER PARTS M90 | S584T210 |
| 2 | SET TRIGGER SPARE PARTS | S584T220 |
| 3 | FIRING PIN COMPLETE M558/590/595 | S5840155 |
| 3 | FIRING PIN COMPLETE M658/690/695 | S5840165 |
| 4 | BOLT SPARE PARTS | S584T240 |
| 6 | BOLT SLEEVE | S5840243 |
| 7 | BOLT HANDLE STEELKN. M58-95 RH | S5840245 |
| 8 | BOLT RELEASE COMPL. M58-95 | S5840255 |
| 9 | TRIGGER GUARD ASSY M558-95 | S5840175 |
| 9 | TRIGGER GUARD ASSY M658-95 | S5840180 |
| 10 | TRIGGER GUARD PARTS M58-95 | S5840260 |
| 12 | RECOIL BLOCK | S584T299 |
| 13 | HARD BUTT PLATE | S5840295 |
| 13 | MASTER BUTT PLATE | S584T296 |
| 15 | REAR SIGHT M89 | S584S310 |
| 15 | REAR SIGHT M58-95 BAT | S584T311 |
| 16 | FRONT SIGHT STD | S584T320 |
| 16 | FRONT SIGHT BATTUE | S584T321 |
| 17 | FASTENING SCREWS M58-95 | S5840265 |
| 20 | RECEIVER PLUG SCREWS | S574T210 |
| 20 | BARREL PLUG SCREWS | S584T211 |
| | STOCK RH STANDARD (OIL FINISH) | |
| | STOCK RH DELUXE (OIL FINISH) | |
| | STOCK RH CONTINENTAL (OIL FINISH) | |
| | STOCK RH SYNTHETIC | |
| | STOCK RH SPORTER (OIL FINISH) | |
| | STOCK LH STANDARD (OIL FINISH) | |